



FALL 2018

Western Foothills Land Trust

BOARD OF DIRECTORS

Robert Van Nest

President

Joe Zilinsky

Treasurer

Sarah Dailey

Clerk

Jeff Chase

Carl Costanzi

Lorie Olson

Richard Sousa

Sarah Timm

Sienna Tinsley

David Watson

Jeff Wilson

Executive Director

Lee Dassler

Program Coordinator

Kelly Hodgkins



Access to Art, Exercise, and the Outdoors

In October, the Trust held a ribbon cutting for the Detert Loop Trail at Shepard's Farm Family Preserve. It was a beautiful day for friends to wheel and walk on the half-mile universally accessible loop. The surfaced trail gently undulates about the former agricultural landscape providing access to six tall Bernard Langlais sculptures on site.

The trail was designed and built by Mike Cooper of Caribou Recreation LLC following the design requirements of the Americans with Disabilities Act. Mike also worked to minimize impacts to the given terrain and trees on site. The two-mile Witt's End mountain biking/hiking trail which connects Shepard's Farm to Witt Swamp Preserve was also designed and built by Cooper.

The project has been in the works for some years, funding was spliced together with generous grants from The Davis Conservation Foundation, the Maine Arts Commission, Norway Savings Bank, and Western Maine Health. The Kohler Foundation provided funding

for the installation of the Langlais pieces at Shepard's Farm in 2015. The Foundation also sponsored interpretive signs for the art.

The land trust also has a half-mile universally accessible trail at Roberts Farm which leads to a magnificent view across Norway Lake and the mountains. The Detert Loop Trail, set in on a former cow pasture, is much more park-like, providing subtle views of a near landscape.

All the trail names at Shepard's Farm Preserve reflect past owners of the land itself: Witt, Crockett, Freeman, Shepard, and Detert. Bill Detert, one of the founders of Maine Machine Products, and his family donated the 20-acre site to the land trust in 2010.

The Preserve is open daily, dawn to dusk, for non-motorized enjoyment. Motorized wheelchairs are also welcomed on the new Detert Trail. Hunting is prohibited on the 20-acre Shepard's Farm Preserve, but is allowed on the 250 acre Witts Swamp Preserve which is adjacent. Trail users please dress for safety.



The Western Foothills Land Trust is dedicated to the conservation and protection of native ecosystems, farm and forestlands, watersheds, and scenic landscapes for the benefit of wild and human communities in Western Maine.



Western Foothills Land Trust

STRATEGIC PLAN 2019-2024

The Board's Strategic Planning Committee has been meeting over the past six months and presented a draft plan to the full Board for review and ratification. The draft plan is available on our website for review.

In the next five years, efforts of the Board and staff will focus on strengthening the fabric of the organization. Beyond prioritized conservation work with Sebago Clean Waters and Maine Farmland Trust, we will focus on realizing the vision for Roberts Farm as an inspiring hub for recreation, education, and conservation. And we will learn how to better tell the story of our work as we respond to the needs of our whole community.

WFLT Strategic Plan 2019-2024 Areas of Focus

- Develop Organizational Capacity

Strengthen committees, volunteer s, staff

Augment financial investment strategies

- Realize the Vision for Roberts Farm Preserve

Identify partners, develop campaign and funding strategies

- Continue Conservation of Farmland, Watersheds, and Forestlands

Sebago Clean Waters focus area

Collaborate with Maine Farmland Trust

Continue to acquire /protect working forestlands

HISTORIC CAMP DONATED



In September, the last eight members of Norway's Cinnamon Camp Club, donated the club's real estate, a cunning 1876 hunting and social camp, to the Trust. The club's members intend for the land trust to sell the property to benefit the Trust's endowment.

For over 140 years, Cinnamon Camp Club members have raised funds to build and maintain a clubhouse, a small stable, and an outhouse on their 2.5-acre property. Originally built as an 8' x 12' shed-roofed cabin, the structure was enlarged, then torn down, and then rebuilt as a two-story clubhouse with a sleeping room upstairs. Constructed prior to automobiles, a small 3-stall stable/shed remains near the Camp Cinnamon Road. While altered and enlarged over the decades, Camp Cinnamon remains a classic well-maintained rustic camp with metal roof, painted clapboard, exposed studs, and no plumbing. Maine Preservation and the State Historic Preservation Commission have been contacted. For more information: **MLS#:** 1375985



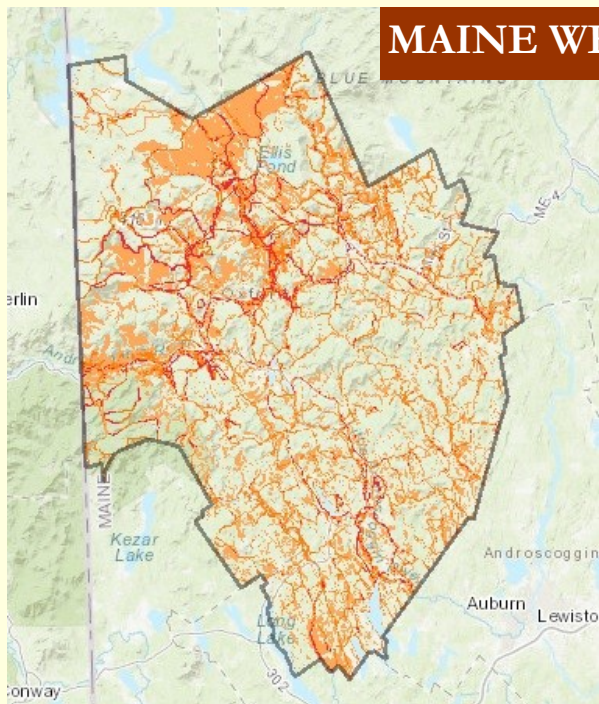
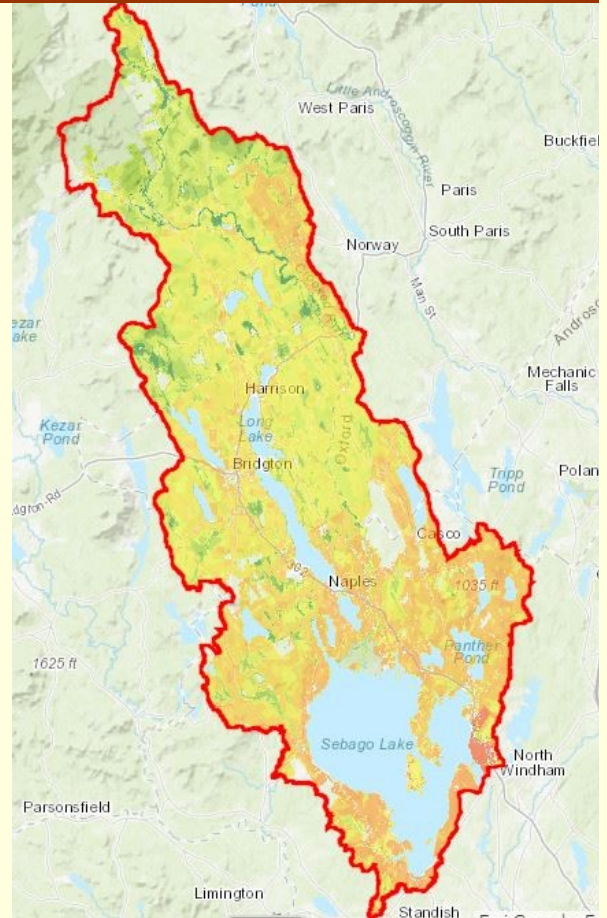
SEBAGO CLEAN WATERS

The Sebago Clean Waters (SCW) partnership continues to work towards a goal of preserving 35,000 acres of land in the Sebago Lake Watershed over the next 15 years. In order to maintain water

quality and preserve access to forests for recreation and sustainable forestry, the partnership intends to increase the pace of conservation in the watershed.

SCW is a consortium of eight nonprofits that includes Western Foothills and our neighbors to the west, Loon Echo Land Trust. Now, with the help of a web-based mapping tool built specifically for this effort, SCW partners are better able to prioritize work towards achieving this goal.

The new mapping tool is comprehensive for land in the entire watershed. It exhibits ranked values based on the best available science for water quality protection, suitability for forestry, carbon stocking and agriculture, development threats, biodiversity, and access for recreation and points of cultural significance. As SCW plans for future conservation projects in the watershed, the mapping tool will help to identify significant parcels based on these values. Finally, printed and digital maps produced with this tool will support the case to land owners, municipalities, businesses, and funders that an increase in land conservation is critical.



MAINE WEST

A REGIONAL CONSERVATION PARTNERSHIP

“Focused in the Oxford Hills, River Valley, and Bethel areas, Maine West advances its mission through network-based, collaborative approaches that build relationships and social capital across all elements of the community; advance tangible, multi-sector projects to deliver near-term benefits to people, communities, and the environment; and build the capacity of partners and other area stakeholders to attract resources and implement projects that address persistent challenges and enhance long-term community well-being”. *From www.mainewest.org*

Thanks to the GIS acumen of The Trust for Public Lands, a Maine West collaborator, a regional conservation viewer tool has been developed to assist Maine West partners (including WFLT) with strategic community conservation planning. The viewer can isolate or layer recreational lands and access, contiguous open or protected lands, farms, working forests, schools, community hubs, and other identified priorities. This tool is what WFLT has long wished for. Thank you Maine West.



Western Foothills Land Trust

Events



THE 11th NORWAY TRIATHLON



Saturday July 14, 2018



and Projects

FALL 2018

NORTH NORWAY FOREST

WFLT recently received a donation of 76 acres of field and forest from Art and Judith Braun

of Bloomington, MN, both Oxford Hills natives. The land was once part of the Stevens's family farm where C.A. Stephens grew up on the Upton Brothers Road. After many decades of careful husbandry, the Brauns have given this property to the Trust with the stipulation that it remain forever in its current state with the division of field and forest intact. The Property is near the Noyes Mountain Preserve, and its protection will further enhance natural habitats in the area. The donors' wish that the forest be managed as forever wild will be recorded in a Declaration of Trust. As the land is for the forest and the wildlife within it, there will not be any signage or any managed trails on this site. The land will be kept in current-use taxation and the Trust will take over payments with an endowment the Brauns have established. The Trust thanks the Brauns for their generosity and pledges to fulfill their wishes in perpetuity.

STREAKED MOUNTAIN PRESERVE PROJECT



The Trust has recently signed a contract to purchase 329 acres on the north side of Streaked Mountain. The working forest is in Buckfield and in Paris, includes blueberry fields, ledges, over 3 acres of wetlands, and an access road to the top of the mountain built and maintained to manage a US Cellular tower site. The forest was harvested a few decades ago and will continue to be managed as a working forest. The Trust is working with The Conservation Fund on a 3-year bridge loan for the purchase and anticipates funding from a variety of sources including Federal, State, and private funds.

Timber sales provide an important revenue stream for the Trust. We have been actively looking to acquire woodlots that also have inherent recreational or resource protection benefits. This large parcel has all these components, and we are thankful to the Kilgore family for their resolve to sell this land to a conservation organization rather than to a developer.





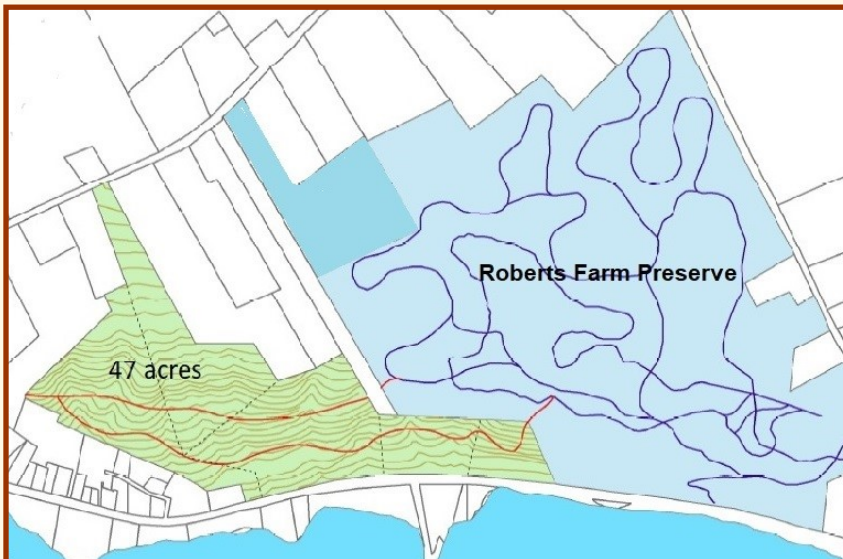
Western Foothills Land Trust Projects

ROBERTS FARM PRESERVE EXTENSION

This fall, thanks to the generosity of a select group of donors, the Trust successfully acquired the last remaining large parcel of undeveloped land on Pikes Hill overlooking the lake. The purchase of the 47-acre parcel adjacent to Roberts Farm Preserve protects the forested entrance to Norway, Lake Pennesseewassee's water quality and viewscape, and provides the opportunity to create several additional kilometers of recreational trails.



Norway, Nov 1 2018 The beauty of the radiant dawn illuminating the morning commute was heightened with the assurance that the forested gateway to Norway would be forever so.



The Trust will initiate a broad fund raising campaign for trail design and construction in 2019. It is hoped that new snowshoe and ski trails will be ready for the 2019-2020 winter season.

Our thanks to all the contributors who helped the Trust realize this dream.

TWITCHELL OBSERVATORY MOVES TO ROBERT'S FARM



A MESSAGE FROM THE PRESIDENT

There are times when the generosity of our supporters is truly humbling. This is one of them. Given the constraints of time, and emboldened by a generous donation and a challenge grant from an anonymous source, a small group of donors was able to raise the entire amount necessary to purchase the Roberts Farm Extension parcel in less than three months. Their combined effort enabled the Trust to obtain this integral parcel without any indebtedness. This in turn will allow the Trust to devote resources toward major trail construction on this property.

It is the prospect of this trail construction that truly excited donors. By obtaining the largest remaining undeveloped parcel close to downtown Norway, the Trust simultaneously protected the natural gateway into town and created the potential to inject a recreational trail system within feet of Main Street. Eventually the proposed trails will pass through beautiful terrain above the lake and will physically connect the Trust's Roberts Farm property to the town. This has an almost Scandinavian feel to it. Trails enhance village life, and the village contains willing users of the trails. It doesn't take much imagination to envision people skiing into town to have lunch; while others, having already eaten, go out for a ski. Since there will be parking at Roberts Farm (with an off-grid EV charger) and town parking across from the trail head on Water Street, both scenarios, and many others, are entirely possible. That is the very definition of synergy.

The Trust hopes to construct ski and snowshoe trails on the newly purchased property in the summer of 2019 for use in the 2019-2020 snow season, with the trails open for hiking in the spring of 2020. The Trust plans to fund trail construction through small grants and support from current trail users and the general membership.

This project has been over five years in the making, proving that conservation work takes patience and perseverance. As a skier, I can't wait to use these trails! But also, as President of the Trust, I can't thank our donors enough for bringing this exciting project one big step towards its fruition.



Robert Van Nest, President

Roberts Farm to Town Trail Campaign

Name _____

Address _____

Town _____ State _____ Zip _____

Email _____ Phone _____

☐ Check made out to: Western Foothills Land Trust-

☐ visa/mc# _____ exp _____ sec. code _____

Your contribution is tax-deductible as a charitable contribution

Western Foothills Land Trust PO Box 107, Norway, ME 04268 207.739.2124 www.wflmaine.org



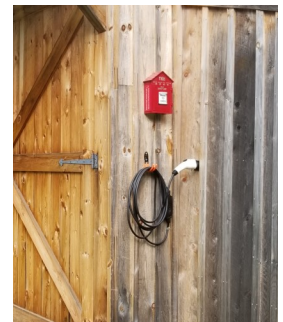
Western Foothills Land Trust

PO Box 107 Norway Maine 04268
www.wfltmaine.org

NONPROFIT ORG.
U.S. POSTAGE PAID
NORWAY, ME
PERMIT NO.12

FALL 2018 NEWSLETTER

Lake Pennesseewassee in the quiet early morning before the 2018 Norway Triathlon



Electric vehicle owners plan on recharging your car while you hit the trails this winter! Maine's first off-grid solar charger has been installed at the Roberts Farm Preserve warming hut, thanks to a grant received by The Center for an Ecology Based Economy (CEBE). The project included funding for additional solar collectors and a new bank of batteries for the charger. Thank you CEBE!

